

Cultivating a Resilient Valley: The Farmer Ag Network's Living Framework for Innovation



Introduction: A Unified Voice for the San Joaquin Valley

The **Farmer Ag Network (FAN)** is a farmer-led, multi-county collaboration serving all eight counties of California's **San Joaquin Valley**. This initiative provides a unified space for shared learning and coordinated action among growers dedicated to strengthening regenerative agriculture, improving water outcomes, and building long-term economic resilience. Rather than a static report, this document serves as a "living framework", a strategic and evolving roadmap designed to adapt to the shifting technical and regulatory landscape of California agriculture.

Core Commitments: The FAN Foundation

The work of **FAN** is grounded in three core commitments that guide every decision and strategic initiative to ensure the movement remains focused on the needs of the producer:

- **Farmer Leadership:** Farmers serve as the primary decision-makers, ensuring that the network's direction is rooted in practical, on-the-ground experience.

- **Open Knowledge:** Technical information and research findings are shared openly and are intentionally made accessible across multiple languages to support the diverse demographics of the **San Joaquin Valley**.
- **Dual Resilience:** Every strategy must demonstrate "Dual Resilience," requiring that solutions simultaneously improve ecological health and the financial bottom line of the farm.

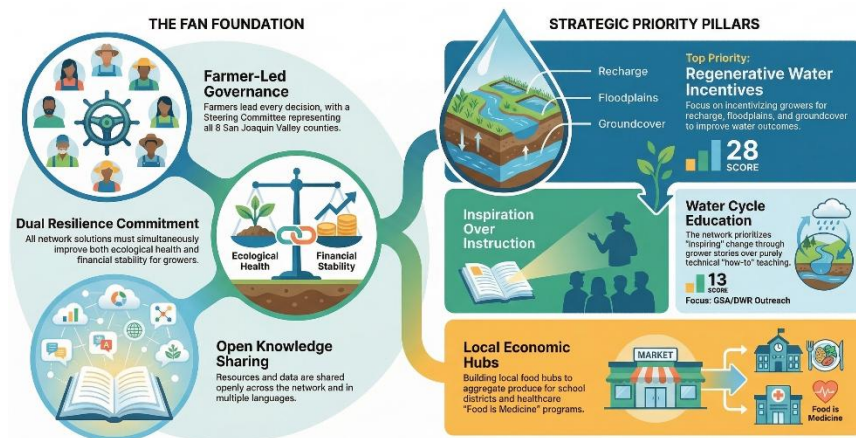
Strategic Pillar 1: Water Stewardship & SGMA Management

The **Farmer Ag Network** takes an aggressive, proactive approach to the **Sustainable Groundwater Management Act (SGMA)**. The network’s uncontested top priority is the creation of financial and regulatory systems that reward growers for regenerative principles; specifically, floodplains, aquifer recharge, and permanent ground cover. By working with the **Department of Water Resources (DWR)** and local **Groundwater Sustainability Agencies (GSAs)**, **FAN** seeks to provide alternatives to "fallowing" by proving the efficacy of regenerative practices.

Water Innovation Strategies

Initiative Type	Actionable Strategy
Incentives	Direct advocacy to DWR for GSA-level regenerative incentives; create district/grower credits for flood-recharge.
Metrics & Data	Ground-truth ET data using Land IQ and Phyttech; deploy spectrometers and drones to validate "white ground" water savings.
Education	Scale the Turlock Irrigation District (TID) Model and "Rainfall Simulator" roadshow to demonstrate infiltration and recharge benefits.

By presenting validated **UC studies** and proof-of-concept data directly to **GSA** boards, the network aims to bridge the disconnect between high-level water management and practical field-level outcomes.





Strategic Pillar 2: The Knowledge HUB & Peer Learning

FAN operates under the philosophy of "Inspiration over Instruction," recognizing that while data drives policy, emotional connection and shared "why" stories drive adoption. This framework utilizes a dual-track learning approach:

1. **In-Person Engagement:** Geographically split field days (led by regional coordinators in the North and South Valley) provide evidence-based, commodity-specific demonstrations. These sessions foster a "Coffee Shop" style support community where growers can discuss successes and failures in a low-stakes environment.
2. **Digital Infrastructure:** A centralized website and "YouTube University" serve as the digital backbone of the network. This includes **CA-specific** "How-To" videos released on a **pre-season timeline** per commodity.

A critical component of this pillar is the "Digital Field Advisor"—a digital translation of the traditional field advisor role that assists growers with complex system design, including biomass management and irrigation type transitions. The website acts as the **"Information desk @ the airport,"** providing a centralized, easy-to-navigate decision support tool. **FAN** also prioritizes the engagement of youth in content creation to ensure professional-grade documentation of the regenerative movement.



Strategic Pillar 3: Economic Viability & "Food is Medicine"

Building a resilient valley requires shifting market infrastructure and cultural mindsets. **FAN** focuses on the economic health of the grower by connecting regenerative practices to human health and local market access.

- **Local Food Hubs:** **FAN** is identifying local wholesalers, such as **O.K. Produce**, and the **SJV Food Hub partnership** to serve as aggregation points for small growers. This infrastructure supports the **CDFA Farm to School Program**, ensuring local produce reaches local students.

- **Funding Aggregation:** To overcome the complexity of grant applications, **FAN** serves as a centralized "Information Hub." This includes identifying technical assistance (TA) from organizations like **F3** and the **NRCS** to help growers navigate the transition to regenerative systems.
- **Nutritional Advocacy:** The network is grounding the "Food is Medicine" concept in current research, such as the **UC Davis** study on the nutritional density of regeneratively grown almonds. By collaborating with healthcare providers like **Kaiser** and exploring "Fresh Rx" models with **Dr. Steven Chen**, **FAN** aims to prove that soil health directly impacts human health.

Governance: Agile Leadership for the Future

To maintain stability and transparency without becoming bogged down in bureaucracy, **FAN** has established a clear, agile governance structure representative of the entire region.

- **Steering Committee:** Members serve **2-year terms** to ensure fresh perspectives while maintaining institutional knowledge.
- **Regional Representation:** The committee mandates representation from all eight **San Joaquin Valley** counties to ensure no region is left behind.
- **Voting Efficiency:** The committee maintains an **odd number** of members to ensure efficient decision-making and avoid "log jams."

The Path Forward: A Call for Collaborative Growth

The **Farmer Ag Network** is gaining momentum and seeks to refine its tangible offerings to the agricultural community. We invite researchers to collaborate on ground-truthing data, fellow growers to join our peer-learning circles, and stakeholders to support our market-building efforts. In response to feedback from members like **Steve Fukagawa** and **Sandy Yager**, we are focusing on clear, actionable goals that provide immediate value to the farm gate. Looking ahead, our **2027 Retreat at Paicines** will serve as a pivotal milestone to evaluate our progress and solidify the next phase of this farmer-led movement. Together, we are cultivating a more resilient, nutrient-dense, and water-secure future for California's heartland.



True regenerative transition requires a mindset that values the process over the destination.