



Impact Report 2025



*Experiential learning on regenerative farms
A program of Ideagarden Institute*



Climate Farm School

TABLE OF CONTENTS

LETTER FROM THE DIRECTOR 3

BY THE NUMBERS 5

ALUMNI IMPACT 6

HOST & PARTNER FARM IMPACT 8

ECOSYSTEM OF PARTNERS 10

WHAT'S NEXT 11

FINANCIAL OVERVIEW 13

RECLAIMING THE FUTURE 15

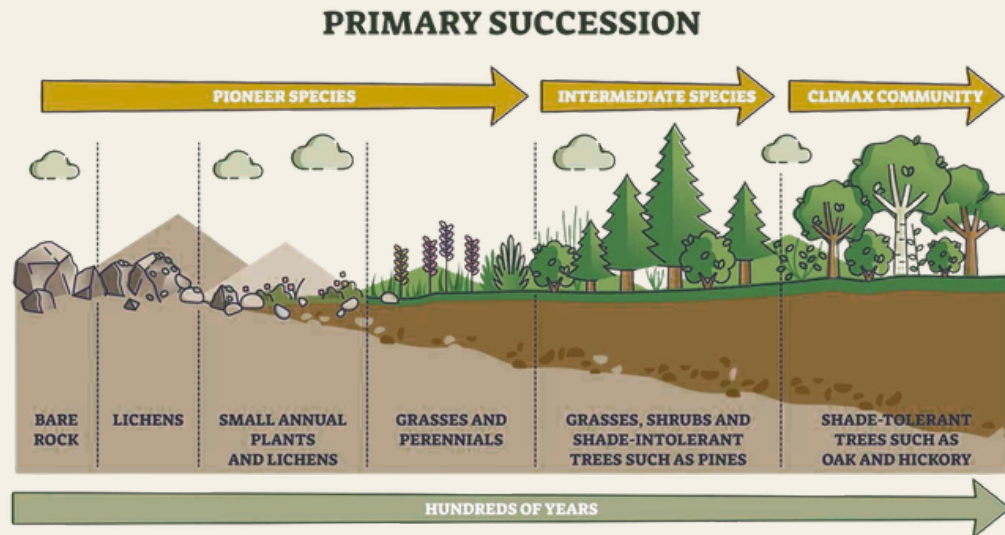
OUR TEAM & ADVISORY BOARD 16

WHAT IS CLIMATE FARM SCHOOL? 17

OUR CURRICULUM 18



LETTER FROM THE DIRECTOR



If I think about not just this past year, but the first 4 years of running Climate Farm School, we are in the “grasses and perennials” phase of ecological succession. We’ve had several host farms and program partners with us since the very beginning, perennializing our relationships together, and also each year, new relationships and farm partnerships form.

While it can take hundreds of years, depending on the climate zone, for land to reach the highest stages of succession, we are very much hoping to expedite this process of building healthier, thriving bioregional food systems thanks to the catalytic nature of our partnerships and our host non-profit, Ideagarden Institute. We have so much to learn from how ecosystems function, about growth rates not out-pacing their own resourcing needs, about necessary redundancy and collective, community-scale interdependence. We are a dynamic, small team moving with a sense of urgency to help solve complex problems at the systems level. And we are growing through expanding partnership networks, taking cues from the adage “if you want to go fast, go alone, if you want to go far, go together.”

I am excited to introduce Climate Farm School to those who are new to our work, and share the high level summary of our impact in the past year with this report.

Notable accomplishments from 2025:

- Graduated 136 new program alumni
- Facilitated 10 of our core courses
- Built 2 custom programs - U.C. Berkeley graduate students in food systems and medical residents from Kaiser Santa Rosa Medical Center
- Maintained our presence in Northern California, Hudson Valley, Italy, and Spain
- Launched new farm partnerships in Ireland (Ballymaloe), Southern California (Condor's Hope and White Buffalo Land Trust) and Central CA (Hidden Villa)

What made the program season so special was the participation of some of our key partners:



Cheyenne Pritchard, Director of **Ideagarden**, attended our very first course of the year at Paicines Ranch.



Kathleen Finlay, President of **Glynwood Center for Regional Food & Farming**, joined as a new program partner and guest faculty at our Italy course.



Jason Grauer, Executive Director at **Stone Barns**; Henry Blair, Grains & Staples at Glynwood; Spencer Fenniman, Farm Manager, Field Crop & Compost Manager at Hawthorne Valley Farm - participated in one of the most inspiring, informative, farmer-to-farmer conversations I've ever heard.



Ed Colloton and Adrian James, **Ideagarden** Board Members attended our June Green Valley course, where we also welcomed 3 healthcare professionals who received Continuing Medical Education units (UC Berkeley Accredited) for the time on the farm.



We are actively extending our host farm network in conjunction with our sister program, **FARMpreneurs**, and had the pleasure of welcoming E.D. Dawnelise Rosen to our September Hudson Valley program.

We traveled to new locations and shared in a mutual knowledge exchange, which inspired us to launch new programming at the following host farms in 2026: **Glynwood** (NY), **Caney Fork** (TN), **Carnation Farms** (WA) and **Pie Ranch** (CA).

As the year wrapped up, we retreated and reflected within our Ideagarden greenhouse, and seeded new partnerships with healthcare and policymaker audiences. We connected with dozens of alumni through our virtual Conversation Series, 1:1 chats, an Alumni Impact Survey and via our End of Year Giving campaign, which had record participation.

My three-year-old daughter has taught me to dance on a regular basis this year, and embodies the joy I feel at the end of the program season when she's twirling around the Hidden Villa living room during dinner clean-up, singing "California Love" at the top of her lungs accompanied by several participants. May we all seek reconnection to food as a form of love, in our own lives and the next generation!

Laney Siegner

Laney, Founder & Executive Director

BY THE NUMBERS

16 INTERNATIONAL PARTICIPANTS

at the Regeneration Academy crash course, where Laney and Ryan were hired as instructors

20 UNIQUE ALUMNI DONORS
in EOY giving campaign, \$3K+each

3 ALUMNI offering Major Gifts (\$25-50k)

Our Alumni

15 PARTICIPANTS
at Inaugural Alumni Course

136 COURSE PARTICIPANTS
(new alumni from 2025)

72 RESPONSES
to our Alumni Impact survey (~25% response rate)

>45% HAVE TRANSITIONED
to work in food systems



Climate Farm School

16 FARM-BASED EDUCATORS

at our second custom course for this audience, delivered in partnership with Hidden Villa and the Farm Based Education Network

7 HOST FARMS,
• 15 farmer guest speakers
• 35+ farm visit sites

\$110k
FLOWED TO REGENERATIVE FARMERS

(for education, lodging, and food procurement) which is 40% of our operating budget

25 PARTICIPANTS FROM KAISER
Santa Rosa medical residency for a one-day workshop

3 NURSES receiving BRN units in Spring courses

Our Farm & Ecosystem Partners

366 REGISTRANTS
for monthly guest talk series across 13 hosted talks

12 COURSES OFFERED
in total (8 core programs, 1 Alumni workshop, 1 program in partnership Regeneration Academy, 2 custom workshops)

4 CONFERENCES ATTENDED
(NYC Climate Week, Climate Underground, Teaching Kitchen Collaborative, Google Food Lab)

5 COMMUNITY EVENTS
Fundors, Musicians, Artists @ Dinners, Concerts across Farmer Network

ALUMNI IMPACT

Climate Farm School: Alumni Impact at a Glance

Climate Farm School (CFS) equips individuals with the knowledge, relationships, and inspiration to transform food systems—creating impact that extends far beyond the farm.

We launched an Alumni Impact & Engagement survey at the end of 2025, and had ~25% of our alumni participate, sharing their experience and feedback.

Lasting Personal & Professional Change

CFS is a catalyst for meaningful shifts in how alumni live and work. Since attending, **45% of alumni report a significant change in their role or professional focus** with 71% reporting at least some change, and **72% say CFS had an immensely significant impact on their personal lives.**

These changes show up in everyday behavior:

- **81%** advocate for local, regenerative, and/or organic farms with friends and family
- **59%** eat more seasonally
- **52%** shop at farmers markets and reduce food waste
- **44%** cook more frequently

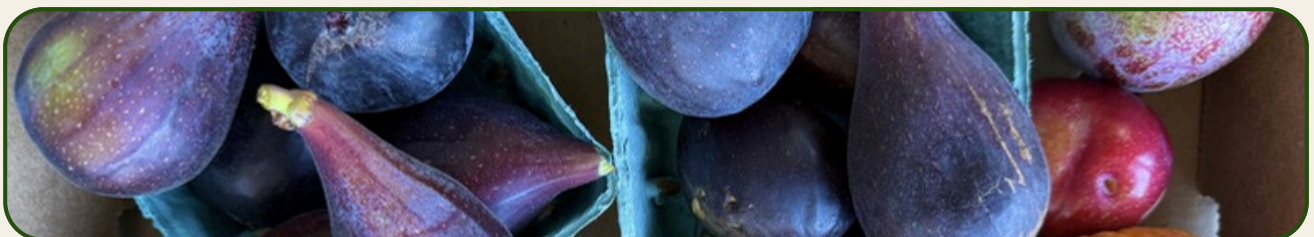
“It’s a life-changing and life-affirming opportunity.”

Strong Gains in Climate & Food Systems Understanding

CFS dramatically deepens alumni understanding of food systems, climate impacts, and regenerative agriculture. Before attending, just **29%** rated their comprehension as comprehensive. After completing a course, **87% report a deep understanding**, with **81% showing overall improvement.**

Alumni consistently describe the program as clarifying complex systems while grounding learning in real-world, on-farm experience.

“CFS opened my eyes to the importance of the soil beneath our feet—and to a community making real change.”



From Learning to Action

CFS inspires ongoing leadership and engagement:

- **72%** of alumni have started, joined, or contributed to climate- or food-related projects inspired by CFS
- **94%** are involved in climate, food systems, or agriculture work, with 65% significantly to very involved

Alumni apply regenerative principles across education, farming, community initiatives, policy, and systems design—multiplying CFS's impact across regions and sectors.

“Climate Farm School clarified my role as a bridge-builder between land, education, and systems design.”



Advocacy Today, Opportunity Tomorrow

CFS earns exceptional loyalty: **82% of alumni would absolutely recommend the program, with 100% reporting positive sentiment.** Alumni highlight the program's relational design, sense of belonging, and long-term influence on their lives.

At the same time, alumni identify a key opportunity for growth. While many remain active in the field, **83% feel only lightly connected to the broader alumni community.** Top needs include professional partnerships, working groups, and advanced workshops—suggesting strong potential to amplify impact through deeper post-course engagement.

Looking Ahead

Climate Farm School is successfully transforming participants into informed advocates and practitioners for regenerative, climate-resilient food systems. By investing in alumni connection and support, CFS can further extend the reach of an already powerful educational experience—strengthening a growing movement for climate action through food.

“Climate Farm School was one of the best things I've ever done. It was so engaging and felt so empowering to learn so many things about the planet and the interconnections between humans/ soil/food/health (health of bodies and health of ecosystems). If only all learning could be so immersive and hands-on.” ~Kelsey Entrekin, R.N. at Sutter Health

HOST & PARTNER FARM IMPACT

2025 Host Farms:



Paicines Ranch

Paicines, California



Green Valley Farm & Mill

Sebastopol, California



Tenuta di Spannocchia

Tuscany, Italy



Hidden Villa Farms

Los Altos, California



White Buffalo Land Trust

Lompoc, California



Hawthorne Valley Farm

Ghent, New York



La Junquera

Murcia, Spain



**Ballymaloe Organic Farm
& Cookery School**

County Cork, Ireland



Condor's Hope Ranch

New Cuyama, California

Climate Farm School is an educational partner to regenerative farms, centering their perspectives, and helping them diversify their revenue streams. By organizing land-based education with partner farms we are creating a space for farmers to contribute meaningfully to narratives of change by sharing how to build and replicate bioregional, climate friendly food systems. Our farmers love hosting this program with us, and are passionate and articulate advocates for what is needed to build regenerative farms and along with it regenerative systems. We firmly believe that it will require trust, relationships, and deep collaboration between farmers and non-farmers to build a better food system for the future, and our course experience is a key ingredient in forging these necessary relationships.

We understand how busy farmers are and how thin farming margins can be, so we fairly compensate our farmers for their work. Farmers are compensated for their time, food purchases, and on-farm lodging (when applicable). Farms that host multiple times per year can bring in as much as \$40k in additional revenue. As we grow, we aspire to increase farmer compensation and evolve our business model such that farmers have a stake in Climate Farm School's overall success.

Several of our host farmers are now also instructors with Climate Farm School, deepening their role as farm-educators. We will continue to diversify and expand our network of both instructors and partner farm sites into the future. We look forward to offering programming at the following new host farms in 2026:



Pie Ranch
Pescadero, California



Caney Fork Farms
Carthage, Tennessee



Glynwood Center
Cold Springs, New York



Dodon Center for Ecological Farming
Edgewater, Maryland



Cascina Baggagera
Milan Italy

EXPANDING ECOSYSTEM OF PARTNERS

A core strategy of Climate Farm School to advance our mission is to partner widely, growing like a mycelial network. We collaborate with the following organizations and food systems leaders as guest speakers, content creators, and more:



Why Partner with Climate Farm School?

“Paicines Ranch has a broader mission around ecological sustainability through farming. Climate Farm School is essentially lifting up the same things we really value and sharing that with a broader audience. It’s been awesome to work with Ryan and Laney, who have great capacity for articulating ideas in an accessible way, and inviting people into the conversation no matter where they are starting from.”

~Greg Richardson on behalf of Paicines Ranch team

WHAT'S NEXT

2026 is poised to be a transformative year for Climate Farm School. In our Strategic Planning process, we identified 7 new vertical opportunities where we could expand and customize our farm-based programming, prioritizing 3 focus areas for 2026:

- **Healthcare sector**
- **Policymakers (Federal, state and local)**
- **University students and centers / programs**

HEALTHCARE SECTOR: Training 100 Changemakers on Farms

Why this audience? Why now?

Building on our experience convening physicians, nurses and medical residents in 2025, we are launching a fundraising campaign to support a national series of pilots for bringing healthcare professionals onto regenerative farms, in California, New York and Tennessee. We seek philanthropic seed funding to catalyze these pilots and include audiences without ability to pay (e.g. medical students & residents, physicians in FQHCs). With a strong proof of concept, we will grow the model and attract additional audiences who can self-fund (physicians with funding for CME, medical centers who can cover costs for their students and faculty to participate). This work is a response to numerous converging signals: the Food is Medicine movement accelerating as a way to address diet-related disease, the evidence behind regenerative agriculture as a pathway to provide both healthier food and a healthy environment, and growing interest from our host farms and participants in bringing medical professionals to the farm for food and nutrition education. **Nutrition education is a notorious gap in medical training, and competency in nutrition is incomplete without understanding how food is grown.**

We are well underway in partnership conversations with regenerative farm partners (Pie Ranch, Caney Fork Farms, and Glynwood) and healthcare institutions (Kaiser Permanente, Vanderbilt University Medical Center, Alameda County Recipe4Health); funding is the critical missing piece to catalyze these pilots. Building on what we started in 2025, **Climate Farm School is positioned to become the national standard for farm-based Food is Medicine training.**



POLICYMAKERS

Why this audience? Why now?

In almost any conversation with farmers and food systems experts about what is needed to accelerate change, the answer is “policy.” Yet policymakers from local to federal levels lack 1) a grounded understanding of regenerative agriculture, 2) enforceable standards and 3) public incentives that can genuinely transform food systems, such as regenerative procurement at scale. Instead, the term ‘regenerative agriculture’ runs the risk of being greenwashed and appropriated by interest groups with conflicting policy goals. Through our curriculum centering hands-on experience, direct-from-farmer knowledge sharing and a deeply transformational personal experience of relationship to land and food, we are well positioned to facilitate curated experiences for policymakers - from congressional staffers to state lawmakers to city offices.

Our programming can facilitate collaboration between farmers, researchers and policymakers to develop policy agendas that center regenerative practices and integrate across agriculture, health, and education sectors. We are in early conversations with partners across the East Coast - particularly New York, Maine and Maryland - and are currently exploring additional farmer and funder collaborations to launch this work in 2026.



UNIVERSITY PARTNERS

Why this audience? Why now?

Most university programs in agricultural sciences teach conventional practices, and programs focusing on sustainable food systems rarely include on-farm education. There is growing interest from university students and professors in farm-based trainings and field days. This creates an opportunity to build outreach and fundraising partnerships to support university student participation in our programs. We intentionally scheduled our first program of the year in 2026 to overlap with several local university Spring Break weeks, and have secured funding to support a group of student participants within the cohort. **Partnering with university departments, centers, and sustainability-focused programs is a way of working upstream** with our programming and empowering future policymakers, corporate leaders, entrepreneurs, health workers and food systems leaders to build a regenerative food future.

We are investigating a collaboration opportunity with farm and organizational partners (Paicines Ranch, Ecdysis) to launch a Regenerative Agriculture Certificate that fills the void in farm-based training in regenerative agriculture. The certificate would be offered as a connected series of experiences on working land: conducting research with the 1000+ Farms Initiative, participating in a Climate Farm School program, and engaging in other farm-based learning through additional partners (e.g. grazing schools, farm apprenticeships). While we are still in the early stages of collaboration, we are excited to lean into our role as educators amplifying the innovative & compelling research coming out of organizations like Ecdysis.

FINANCIAL OVERVIEW

FUNDRAISING: From Alumni Donors to Foundation Partners.

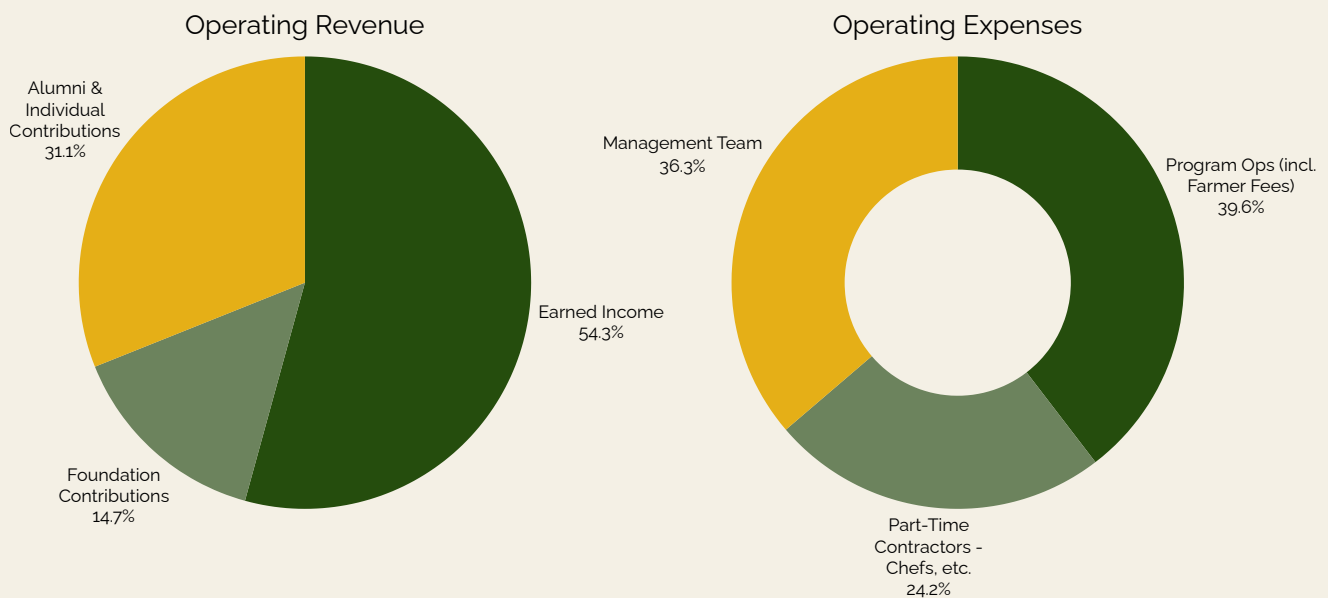
In 2025, we successfully fundraised \$175,000 from various sources, resulting in about 46% of revenue from foundations and alumni donations. We also inherited several donors from Soil Centric, a partner non-profit that is merging with Climate Farm School. As seen in the financial overview below, we could not have delivered our intended impact without this philanthropic support - unexpected costs increased our program expenses and several fall programs saw low enrollment and cancellations. Historically, our management team has been funded by external sources.

In 2026, we intend to shift our earned income to over 60% by ensuring a positive gross margin on every course program (e.g. with stronger marketing to drive enrollment) and estimate flat operating expenses year-over-year, but may adjust as we carefully manage against our cash flow in the first half of 2026.

Operating Revenue		%
Earned Income	\$189,600.00	54.27%
Foundation Contributions	\$51,250.00	14.67%
Alumni & Individual Contributions	\$108,505.00	31.06%
Total Operating Revenue	\$349,355.00	
		
Operating Expenses		
Program Operations	\$157,090.00	39.58%
Management Team	\$143,930.00	36.26%
Part-Time Contractors - Chefs, Farm Facilitators, etc.	\$95,867.00	24.15%
Total Operating Expenses	\$396,887.00	
		
Operating Income	-\$47,532.00	

Surviving a year like 2025, with the political and economic headwinds faced by climate and social justice non-profits, feels like both a miracle and a testament to the rootedness of our work within the community we've built. Our alumni want us to keep going. Our host farms want us to keep going. There is tangible financial impact to regenerative farms through their own earned revenue as a result of this work. However, operating with razor thin margins means a single unsuccessful course program, or just one month of misaligned resources, can result in a precarious financial position that prevents us from focusing on the most significant work: changing minds & hearts and giving back to our farmers & the land.

We aspire towards thriving, abundance, and reciprocal relationships with all involved in our network. And we see opportunities this year to deepen partnerships and expand fundraising with support from Foundations. We warmly invite readers of this Report to pass along intros to Foundations who seek to support regenerative agriculture education for either specific or general audiences, Food is Medicine work, and regenerative farm procurement and/or policy. And **we'd love to host you at a quarterly Farm Luncheon if you are a funder interested in supporting our work** - please reach out to laney@climatefarmschool.org.



RECLAIMING THE FUTURE

As I'm writing this, too many fellow Americans are unable to leave their homes for fear of encountering ICE, unable to follow their daily routines with a feeling of safety, unable to send their kids to school. One of our Advisory Board members shared an article authored by the McKnight Foundation reminding those of us "who have the freedom and privilege to wake up every day and work toward a better, more sustainable future" to use our voices to bridge silos, and "share capacity in solidarity with direct-service organizations." Our team at Climate Farm School is actively discussing the events unfolding nationally, amplifying resources from frontline organizations protecting migrant farmworkers, and reaffirming our organizational commitments to equity, justice, democracy and mutual aid. We are reviewing and updating our Anti-Racism Action Plan, created after participating in the Soul Fire Farm Uprooting Racism in Food Systems training (2022), and ensuring to the best of our capacity that our programs remain accessible to all (regardless of ability to pay) and representative of the diverse spectrum of farmer voices (across age, gender identity, race and socioeconomic status). Our programs offer a healing space for reconnection- to self, land and community- that is especially needed and important in times of national trauma. We hope to see you at one of our farm partner sites in 2026.

“All flourishing is mutual”

- Robin Wall Kimmerer



Do you have any questions about reclaiming the future with us?

Please contact us at programs@climatefarmschool.org.

[Newsletter](#)

[BlueSky](#)

[LinkedIn](#)

[YouTube](#)

[Donate](#)

A program of



OUR TEAM & ADVISORY BOARD



Laney Siegner
*Executive Director,
Climate Farm School*



Ryan Peterson
*Director of Programs,
Climate Farm School*



Megan Wang
*Strategic Partnership
Manager & Hudson
Valley Regional Lead*



Gary Podesto
*Culinary Lead & Special
Projects Advisor*



Jess Thuja
Marketing Manager



Laïla Scala
Graphic Designer



Alice Tibbetts
*Fledgling Farm
Farmer-educator*



Aubrie Maze
*Brambletail Homestead,
Farmer-educator*



Caiti Hachmeyer
*Red H Farm
Lecturer, Sonoma State
Farmer-educator*



Jesse Smith
*White Buffalo Land
Trust, Farmer Educator*



Elaine Patarini
*Director,
Paicines Ranch
Advisory Board*



Ed Colloton
*Partner Emeritus,
Bessemer Venture Partners
Advisory Board*



Meghann Flynn Beer
*Nonprofit Consultant
Advisory Board*



Kris Madsen, M.D.
*Professor of Public Health,
UC Berkeley
Advisory Board*



Kelly Mulville
*Vineyard Director,
Paicines Ranch
Advisory Board*

Visit our [website](#) for staff and advisory board bios.

WHAT IS CLIMATE FARM SCHOOL?

Climate Farm School is the only on-farm, evidence-based, farmer-led experience built for those ready to join the community leading food systems transformation.

See 2-min video below sharing who we are as a program and some of our core values: community, connection, and health.



Subscribe to our YouTube channel to stay connected and learn from our diverse ecosystem of farmers, host farms, educators, and alumni.

Climate Farm School's program is rooted in an ethic of experiential learning, farmer empowerment, diversified food system stakeholder collaboration, and ecosystem restoration. We work to ensure our core values of curiosity, generosity, kindness, and natural abundance make their way into all of our endeavors. Climate Farm School acts as a career exploration, acceleration, and leadership development pipeline for current and aspiring food systems leaders. We offer a unique opportunity to spend a week living in community on a regenerative farm, learning directly from farmers and experiencing farming practices that deliver both healthy food and ecosystem services. Our courses are delivered with attention to individual and group wellbeing, and are designed with regenerative hospitality in mind.

In a world where we are becoming more and more disconnected, Climate Farm School is working to connect us back with our food, with our earth, and with each other. We are giving people a space to be empowered in a time when many of us may be feeling overwhelmed, or unsure what our next step is in building a better food system, and a better world.

OUR CURRICULUM

Our core program involves three weeks of online learning and one week of an on-farm experience. During the first two weeks we release eight self guided modules for participants to engage with. The modules are on the following topics:

Class 00: Welcome to the Climate Farm School	Class 01: The Food-Climate Nexus	Class 02: Soil Health 101	Class 03: Soil Health 201
Class 04: Sustainable Water Resource Management	Class 05: Role of Animals in Regenerative Farming Systems	Class 06: Models of Transformation	Class 07: Future of Food

Each online week includes a synchronous zoom session with the cohort. There are two assignments: in the first, Future of Food 2040, participants imagine a future food system that is both climate resilient, healthy, and equitable, and describe the steps it took to get there collectively between now and 2040. After the on-farm week, the second assignment, the Food and Climate Action Plan, is released and a third synchronous zoom meeting is held to present action plans and wrap up the course. The Food and Climate Action Plan serves as an important tool for participants to reflect on their time throughout the course and come away with a personal plan for how to apply their newfound knowledge into their careers and lives.

During the on-farm week, the group spends each day participating in hands-on activities, farm tours and workshops, group discussions, and farm-to-table dinners prepared by teams of participants alongside one of our talented chefs. We end each day with a daily debrief, D-I-G-A, a collective reflection exercise for group processing. See our [current course offerings](#) and apply on our website.



A sample schedule from a week at Green Valley Farm + Mill in Sebastopol, California:

Date	Morning activity	Afternoon 'Barn Classroom' Topic, Activities	Dinner	Dinner Team	Evening Activity
6/9 Mon	Welcome Circle, Course Roadmap and Farm Tour (10:00 am - 12:00 pm) <i>Laney and Aubrie</i>	Soil Carbon Workshop with Point Blue Conservation Science (2:00 - 5:00 pm) <i>Laney and Erika Foster</i>	Dinner with Gary Podesto	Barbara and Max	Clean-Up D-I-G-A
6/10 Tue	Morning Milking; Grassland + Grazing; The Role of Animals (8:00 am - 12:00 pm) <i>Aubrie Maze</i>	Cheesemaking in the Creamery (2:00 - 5:00 pm) <i>Aubrie Maze</i>	Dinner with Gary Podesto	Ava and Adrian	Clean-Up D-I-G-A
6/11 Wed	Fledgling Farm: Diversified veggie production (8:00 am - 12:00pm) <i>Alice Tibbetts + Laney</i>	Definitions, recent research and key debates in regenerative agriculture (2:30 - 4:30 pm) <i>Laney and Claire</i> Wine tasting in the vineyard @ Green Valley (4:30-5:30)	Dinner with Gary Podesto	Stephanie and Mike	Clean-Up D-I-G-A
6/12 Thur	Longer Table Farm: growing for food hubs (8:30 - 12:00 pm) <i>Will Holloway</i>	Intersections of soil health and human health (2:00 - 3:00 pm) Visit to Ceres Community Project garden: organic medically tailored meals (3-5 pm)	Dinner with Gary Podesto	Ed and Katrina	Clean-Up D-I-G-A
6/13 Fri	Seaweed foraging on the Sonoma Coast (6:30 - 11:30 am) <i>Maria Clementi, Chef and forager</i>	Models of Transformation: Community food systems and education (3:00 - 4:30 pm) <i>Laney & Wanda Stewart</i>	Dinner with Gary Podesto	Michael and Haley	Fireside D-I-G-A
6/14 Sat	Climate Action Plans; Closing <i>Laney</i>	Late Morning Departures			

“Envisioning regenerative futures starts with programs like this.”

~Gretchen Kish

